

## NOTE:

## MATERIAL

HOUSING:

PBT UL94V-0, BLACK

CONTACT:

BRASS

SHELL:

BRASS

NUT:

BRASS

O-RING:

EPDM, BLACK

## FINISH

CONTACT:

10u" GOLD PLATED

UNDER PLATE:

NICKEL

NUT:

NICKEL

SHELL:

NICKEL

## ELECTRICAL

RATED CURRENT:

4A

RATED VOLTAGE:

250V

INSULATOR RESISTANCE:

100 MOhms MIN.

CONTACT RESISTANCE:

10 mOhms MAX.

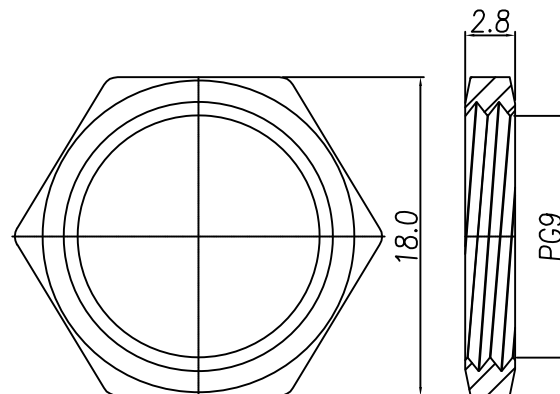
WATER PROOF:

IP67

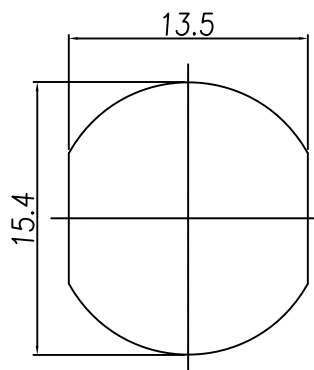
## ENVIRONMENT

OPERATION TEMPERATURE:

-40°C TO +85°C



NUT



RECOMMEND PANEL CUT-OUT

RoHS COMPLIANT



THESE DRAWINGS AND SPECIFICATIONS ARE THE PROPERTY OF NorComp AND SHALL NOT BE REPRODUCED, COPIED OR USED AS THE BASIS FOR THE MANUFACTURE OR SALE OF APPARATUS WITHOUT WRITTEN PERMISSION.

DRAWN:

J. KADEL

DATE:

11/05/2020

UNITS = mm

DO NOT SCALE FROM DRAWING

NorComp

SCALE:

NTS

SHEET

OF

1

1

REV

0

DWG NO.

859-004-203R2F4