

NOTE:

MATERIAL	
HOUSING:	PA66 UL94V-0, BLACK
CONTACT:	BRASS, 10u" GOLD
SHELL:	BRASS, NICKEL PLATED
X-SHELL:	ZINC ALLOY
NUT:	BRASS, NICKEL PLATED
BACK SHELL:	BRASS, NICKEL PLATED
ORING:	EPDM
ELECTRICAL	
RATED CURRENT:	0.5A
RATED VOLTAGE:	50VAC/60VDC
INSULATION RESISTANCE:	100 MOhms MIN.
CONTACT RESISTANCE:	10 mOhms MAX.
WATER PROOF:	IP67
ENVIRONMENT	
OPERATION TEMPERATURE:	-40°C TO +85°C
MAX WIRE AWG:	24

858-X08-203RLS4

- *SEE PAGE 2
- 0 = \varnothing 7.5mm BACK SHELL
- L = \varnothing 9.0mm BACK SHELL
- N = NO BACK SHELL INCLUDED
- 3 = BRASS/NICKEL (B/N) BACK SHELL & NUT
- T = B/N BACK SHELL / STAINLESS STEEL NUT
- 1 = GOLD FLASH
- 4 = 10u" GOLD

RoHS COMPLIANT

UNITS = mm

DO NOT SCALE FROM DRAWING



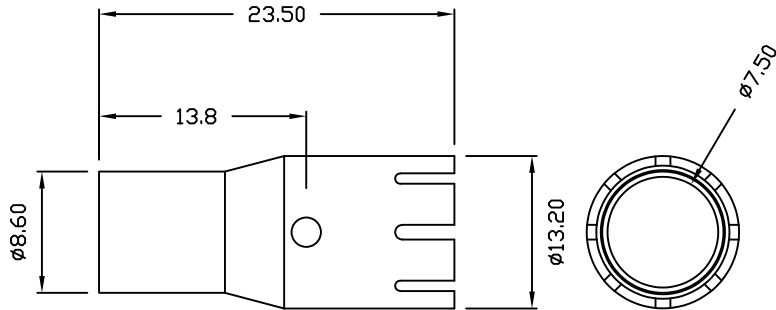
THESE DRAWINGS AND SPECIFICATIONS ARE THE PROPERTY OF NorComp AND SHALL NOT BE REPRODUCED, COPIED OR USED AS THE BASIS FOR THE MANUFACTURE OR SALE OF APPARATUS WITHOUT WRITTEN PERMISSION.

DRAWN:
J. KADEL
DATE:
12/16/2020

NorComp

SCALE: NTS	SHEET 1	OF 2	REV 2
DWG NO. 858-X08-203RLS4			

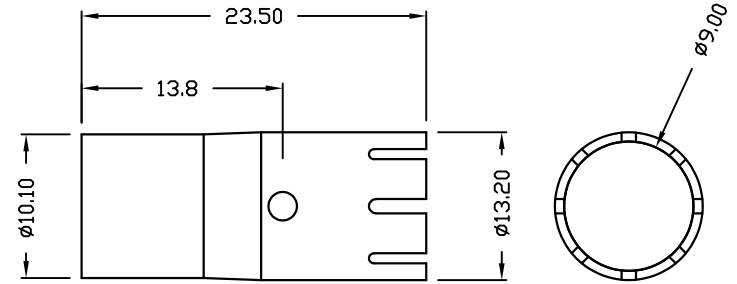
BACK SHELL
OPTION "O"



RECOMMENDED
CRIMPING INSTRUCTIONS
OPTION "O"

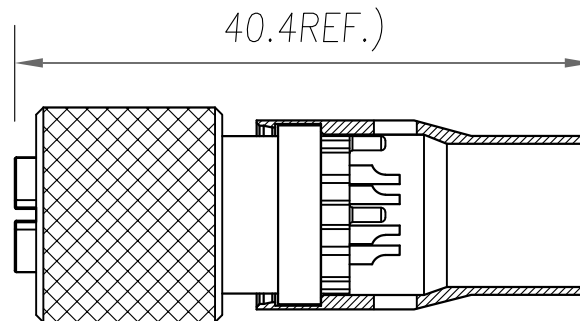
1. BUILD UP WIRE OD TO min $\phi 7.0\text{mm}$ W/ HEATSHRINK
2. USE 0.305" HEX CRIMP TOOL
*MAY NOT BE SUITABLE FOR ALL APPLICATIONS

BACK SHELL
OPTION "L"



RECOMMENDED
CRIMPING INSTRUCTIONS
OPTION "L"

1. BUILD UP WIRE OD TO $\phi 8.3\text{mm}-\phi 8.5\text{mm}$ W/ HEATSHRINK
2. USE 0.350" HEX CRIMP TOOL
*MAY NOT BE SUITABLE FOR ALL APPLICATIONS



RoHS COMPLIANT

UNITS = mm

DO NOT SCALE FROM DRAWING



THESE DRAWINGS AND SPECIFICATIONS ARE THE PROPERTY OF NorComp AND SHALL NOT BE REPRODUCED, COPIED OR USED AS THE BASIS FOR THE MANUFACTURE OR SALE OF APPARATUS WITHOUT WRITTEN PERMISSION.

DRAWN:

J. KADEL

DATE:

12/16/2020

NorComp

SCALE:

NTS

SHEET

OF

2

2

REV

2

DWG NO.

858-X08-203RLS4