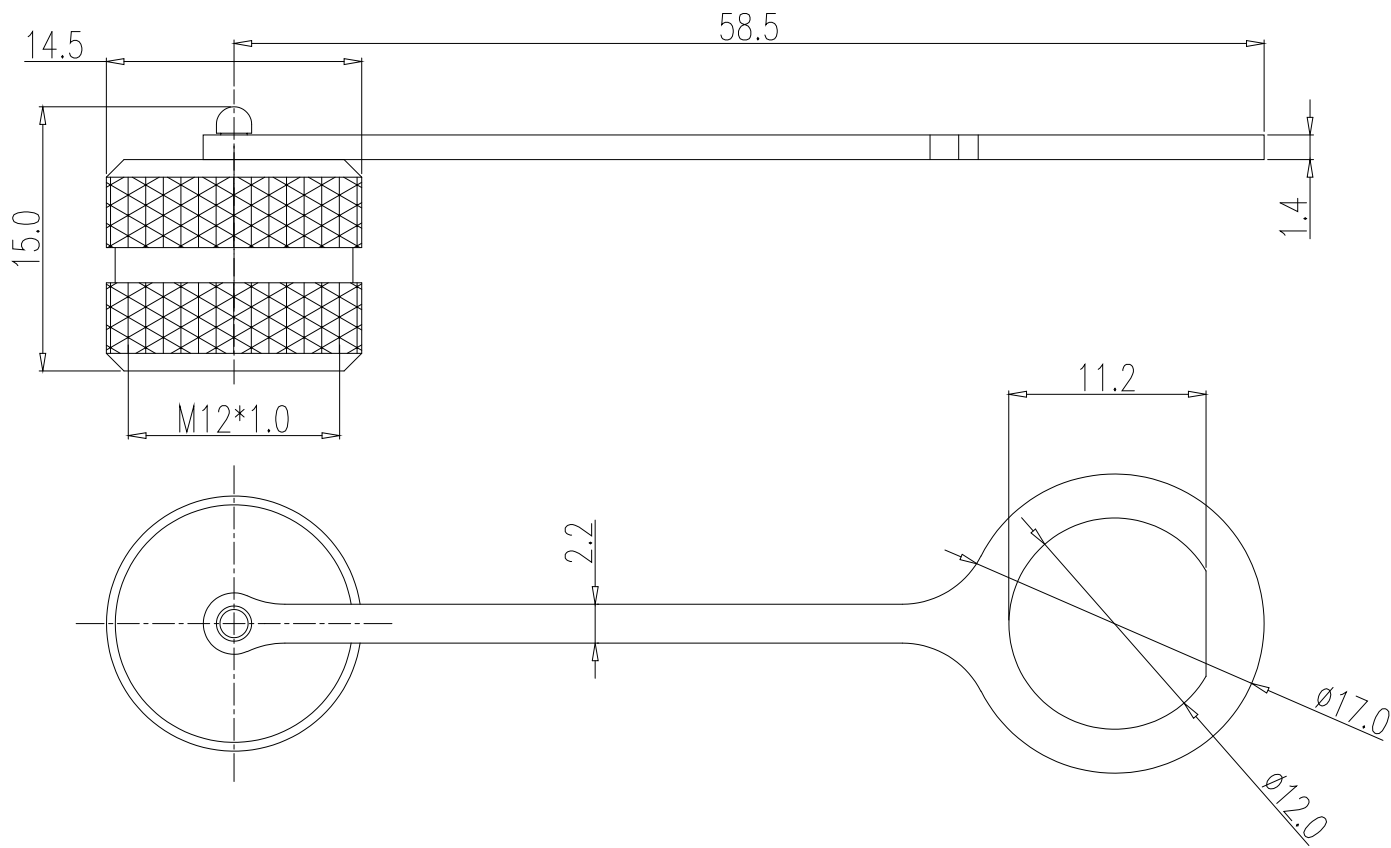


DESCRIPTION: M12 MALE STAINLESS STEEL TETHERED DUST COVER

SPECIFICATIONS:

MATERIALS:

NUT: 316 STAINLESS STEEL
ORING: SILICONE, BLACK
TETHER: PVC, BLACK



RoHS COMPLIANT



THESE DRAWINGS AND SPECIFICATIONS ARE THE PROPERTY OF NorComp AND SHALL NOT BE REPRODUCED, COPIED OR USED AS THE BASIS FOR THE MANUFACTURE OR SALE OF APPARATUS WITHOUT WRITTEN PERMISSION.

DRAWN:
J. KADEL

DATE:
01/22/2026

UNITS = mm

DO NOT SCALE FROM DRAWING

NorComp

SCALE:
NTS

SHEET 1 OF 1

REV 0

DWG NO. 858-MDC-SS-T