

DESCRIPTION: M12; 4 POS; FEMALE; B CODE; CABLE MOUNT

## NOTE:

### MATERIAL

HOUSING:	PBT UL94V-0, BLACK
CONTACT:	BRASS
SHELL:	BRASS
NUT:	BRASS
O-RING:	EPDM, BLACK

### FINISH

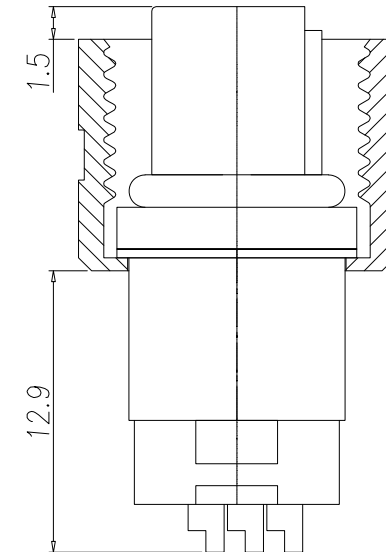
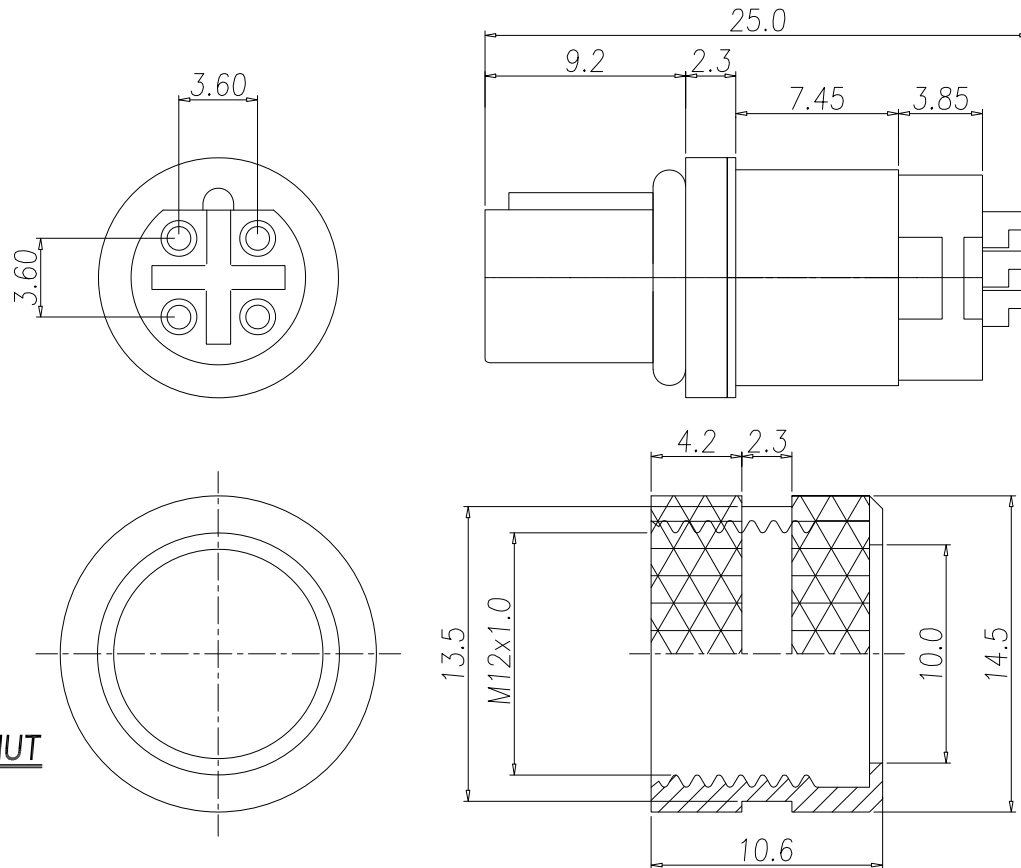
CONTACT:	10u" GOLD PLATED
UNDER PLATE:	NICKEL
NUT:	NICKEL
SHELL:	NICKEL

### ELECTRICAL

RATED CURRENT:	4A
RATED VOLTAGE:	250V
INSULATOR RESISTANCE:	100 MΩhms MIN.
CONTACT RESISTANCE:	10 mΩhms MAX.
WATER PROOF:	IP67

### ENVIRONMENT

OPERATION TEMPERATURE:	-40°C TO +85°C
MAX WIRE AWG:	24



NUT

RoHS COMPLIANT



THESE DRAWINGS AND SPECIFICATIONS ARE THE PROPERTY OF NorComp AND SHALL NOT BE REPRODUCED, COPIED OR USED AS THE BASIS FOR THE MANUFACTURE OR SALE OF APPARATUS WITHOUT WRITTEN PERMISSION.

DRAWN:  
M. SIGMON

DATE:  
11/17/2015

UNITS = mm

NorComp

DO NOT SCALE FROM DRAWING

SCALE:  
NTS

SHEET OF  
1 1

REV  
2

DWG NO.

858-B04-203RLS4