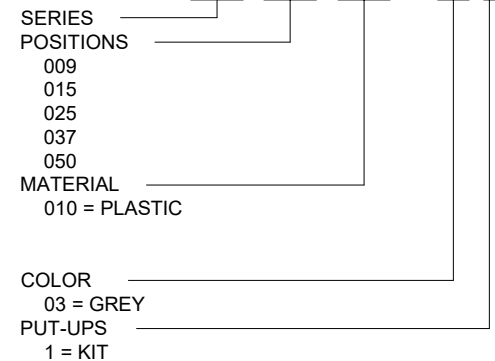


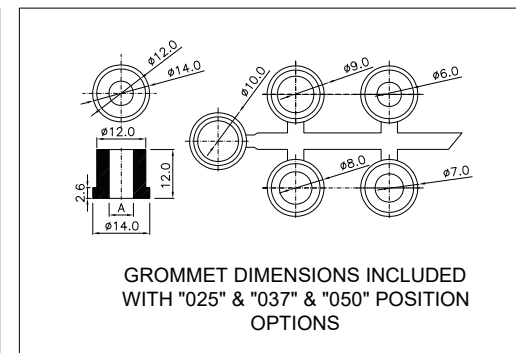
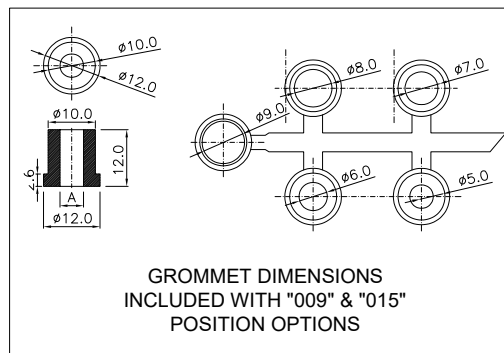
**BACK SHELL KIT INCLUDES:**

- 2 - BACK SHELL HALVES
- 2 - 4-40 MATING SCREWS
- 2 - SADDLE WASHERS
- 2 - HOUSING SCREWS
- 2 - HOUSING NUTS
- 1 - GROMMET TREE - VARIOUS SIZES  
(NON-CONDUCTIVE GROMMETS)

**979-YYY-010 R 03 1**



DIMENSIONS(mm)					
SIZE	A <sup>±0.015</sup>	B <sup>±0.010</sup>	C <sup>±0.015</sup>	D <sup>±0.015</sup>	E
009	31.28	24.99	48.60	16.66	9.00
015	39.50	33.32	48.13	17.00	9.50
025	53.34	47.04	44.80	16.64	10.00
037	69.80	63.50	48.26	16.64	13.00
050	68.50	61.11	48.26	19.56	13.00



RoHS COMPLIANT

UNITS = mm

DO NOT SCALE FROM DRAWING



THESE DRAWINGS AND SPECIFICATIONS ARE THE PROPERTY OF NorComp AND SHALL NOT BE REPRODUCED, COPIED OR USED AS THE BASIS FOR THE MANUFACTURE OR SALE OF APPARATUS WITHOUT WRITTEN PERMISSION.

DRAWN:  
P. JENKINS

DATE:  
07/28/2005

NorComp

SCALE:  
NTS

SHEET 1 OF 1

REV 7

DWG NO.

979-YYY-010R031