

0.551 [14.00] MAX  
CABLE DIAMETER

GROUNDING  
SCREW  
(PHILLIPS)



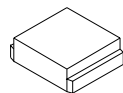
HOUSING  
SCREW  
(PHILLIPS)



MOUNTING  
SCREW  
(PHILLIPS)



CABLE  
SLOT  
COVER

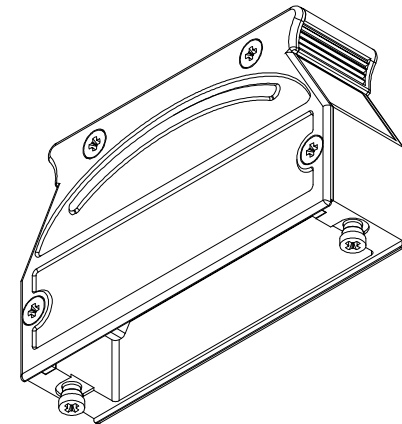


CABLE DIAMETER

0.551 [14.00] MAX

**MATERIAL:**

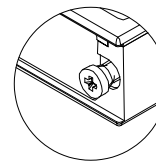
- BACKSHELL: ZINC ALLOY
- COVER: ZINC ALLOY
- MOUNTING SCREWS: STEEL, NICKEL PLATED
- HOUSING SCREWS: STEEL, ZINC PLATED
- GROUNDING SCREW: STEEL, ZINC PLATED
- CABLE SLOT COVER: ZINC ALLOY
- OPERATING TEMP: -55°C TO +90°C



**BACKSHELL KIT INCLUDES:**

- (1) BACKSHELL
- (1) BACKSHELL COVER
- (2) MOUNTING SCREWS (#4-40)
- (4) HOUSING SCREWS (M2.5x0.45)
- (1) GROUNDING SCREW (M2.5x0.45)
- (2) CABLE SLOT COVER

\*\*SEE PAGE 2 FOR CABLE CLAMPS



The mounting screws included in this kit will not mate with any NorComp current hardware options. If using a NorComp slide lock kit, it is recommended to replace said mounting screws with the mounting screws included in NorComp slide lock kits. Please refer to NorComp 975M Series product page for slide lock hardware options (purchased separately).

RoHS COMPLIANT

UNITS = inch [mm]

DO NOT SCALE FROM DRAWING



THESE DRAWINGS AND SPECIFICATIONS ARE THE PROPERTY OF NorComp AND SHALL NOT BE REPRODUCED, COPIED OR USED AS THE BASIS FOR THE MANUFACTURE OR SALE OF APPARATUS WITHOUT WRITTEN PERMISSION.

DRAWN:  
M. SIGMON

DATE:  
01/14/2014

NorComp

SCALE:  
NTS

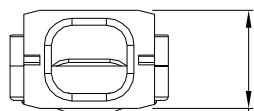
SHEET 1 OF 2

REV 4

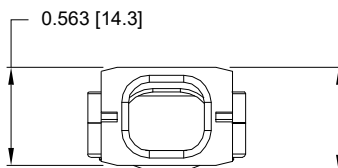
DWG NO.

975M050-030R121

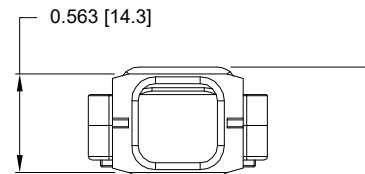
## CABLE CLAMPS ORDERED SEPARATELY



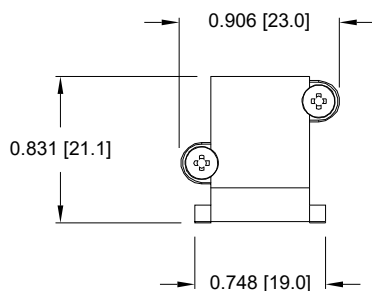
0.563 [14.3]



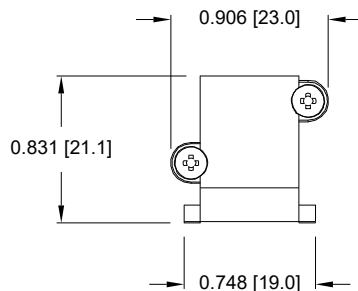
0.603 [15.3]



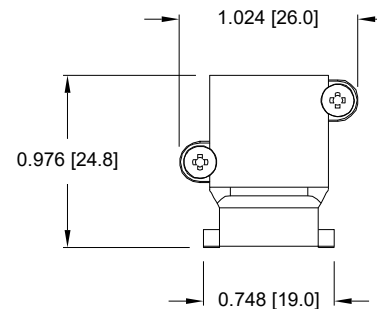
0.673 [17.1]



P/N 955-50-SR-8-10  
CABLE RANGE = 0.315 - 0.394



P/N 955-50-SR-11-14  
CABLE RANGE = 0.433 - 0.551



P/N 955-50-SR-14-16  
CABLE RANGE = 0.551 - 0.630

RoHS COMPLIANT



THESE DRAWINGS AND SPECIFICATIONS ARE THE PROPERTY OF NorComp AND SHALL NOT BE REPRODUCED, COPIED OR USED AS THE BASIS FOR THE MANUFACTURE OR SALE OF APPARATUS WITHOUT WRITTEN PERMISSION.

DRAWN:  
M. SIGMON

DATE:  
01/14/2014

UNITS = inch

DO NOT SCALE FROM DRAWING

NorComp

SCALE:  
NTS

SHEET 2 OF 2

REV 4

DWG NO.

975M050-030R121