

\* UNLESS OTHERWISE SPECIFIED TOLERANCES  
ON DECIMAL IS: ANGLE  $\pm 5^\circ$   
UNIT: MM X.  $\pm 0.38$   
X.X  $\pm 0.25$

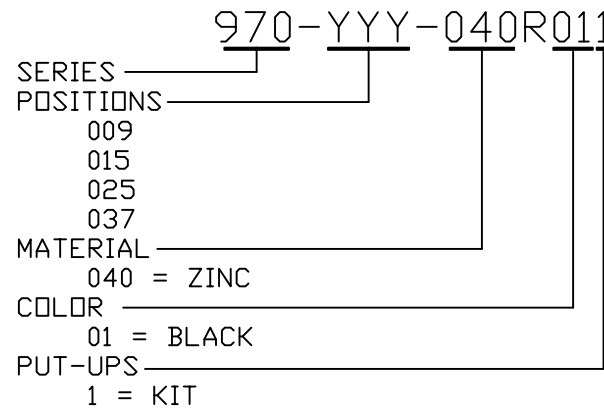
DIMENSIONS(mm/in)				
SIZE	A $\pm \frac{.50}{\pm 0.02}$	B $\pm \frac{.50}{\pm 0.02}$	C $\pm \frac{.50}{\pm 0.02}$	D $\pm \frac{.25}{\pm 0.01}$
9	31.20	39.90	15.00	24.99
	1.228	1.571	0.591	0.984
15	39.50	41.50	15.00	33.32
	1.555	1.634	0.591	1.312
25	53.40	48.60	15.00	47.04
	2.102	1.913	0.591	1.852
37	69.70	53.60	15.00	63.50
	2.744	2.110	0.591	2.500

MATERIAL: DIE-CAST ZINC ALLOY  
 PLATING: BLACK ENAMEL  
 JACKSCREWS: STEEL, BLACK OXIDE  
 M3 HOODSCREWS: STEEL, BLACK OXIDE  
 COMPRESSION INSERT: ABS UL 94-HB  
 COMPRESSION SPRING: STEEL, NICKEL PLATED  
 OPERATING TEMP:  $-40^\circ\text{C}$  TO  $+120^\circ\text{C}$

BACKSHELL KIT INCLUDES:

- (2) BACKSHELL HALVES
- (2) 4-40 THUMBSCREWS
- (2) HOUSING SCREWS
- (1) SET OF COMPRESSION INSERTS-VARIOUS SIZES  
 DIAMETERS: 4mm(.157"), 5mm(.197"), 7mm(.276"), 9mm(.354")

\*\*NOTE: 3 in-lbs IS RECOMMEND TORQUE FOR HOUSING SCREWS



RoHS COMPLIANT

UNITS = "as specified" DO NOT SCALE FROM DRAWING



THESE DRAWINGS AND SPECIFICATIONS ARE THE PROPERTY OF NorComp AND SHALL NOT BE REPRODUCED, COPIED OR USED AS THE BASIS FOR THE MANUFACTURE OR SALE OF APPARATUS WITHOUT WRITTEN PERMISSION.

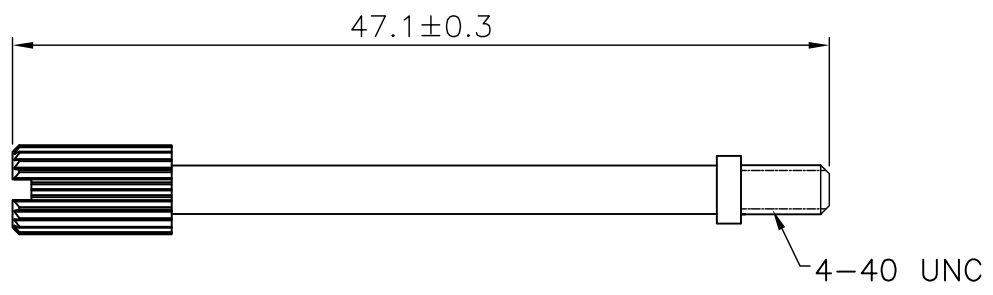
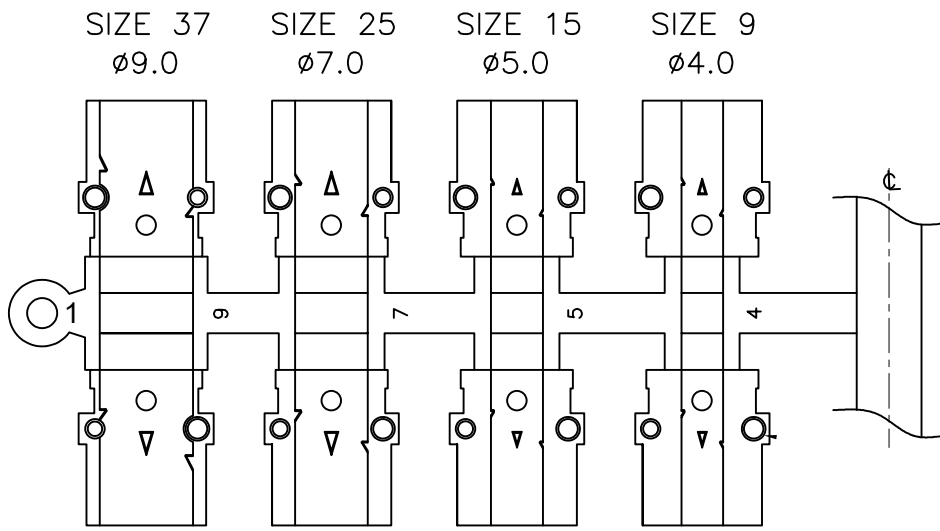
DRAWN:  
PAM JENKINS

DATE:  
06/10/2005

NorComp

SCALE: NTS SHEET 1 OF 2 REV 12

DWG NO. 970-YYY-040R011



RoHS COMPLIANT

UNITS = mm

DO NOT SCALE FROM DRAWING



THESE DRAWINGS AND SPECIFICATIONS ARE THE PROPERTY OF NorComp AND SHALL NOT BE REPRODUCED, COPIED OR USED AS THE BASIS FOR THE MANUFACTURE OR SALE OF APPARATUS WITHOUT WRITTEN PERMISSION.

DRAWN:  
PAM JENKINS  
DATE:  
06/10/2005

NorComp

SCALE: NTS	SHEET 2	OF 2	REV 12
DWG NO.		970-YYY-040R011	