

CUSTOM CABLE ASSEMBLIES

VERSATILE SOLUTIONS
WITH ENGINEUTIVE
DESIGNS

**RUGGED &
RELIABLE**

OVERMOLDING
CIRCULARS
D-SUBS
MICRO-D



DESIGN ASSISTANCE AND SERVICE FROM OUR EXPERIENCED ENGINEERING TEAM

CUSTOM SOLUTIONS FOR EVERY APPLICATION

Whether your application is industrial robotics, ruggedized environmental sensors, fleet telematics or high precision medical equipment – NorComp offers custom cable solutions with low MOQ requirements to fit your application.

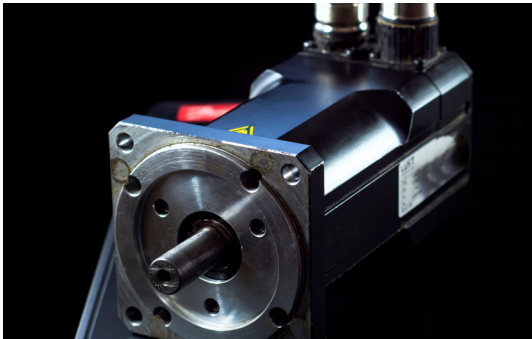
From high power applications that drive mobile systems to high speed signals that provide critical data, NorComp offers a wide variety of connector & cable solutions that get the job done.





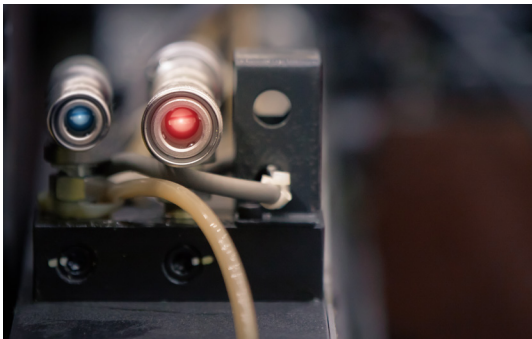
POWER SOURCES

When customers who rely on NorComp for power connectors discovered we also manufacture custom cables, they quickly tapped into our responsive engineering team to design the finished assemblies required for power distribution throughout their designs.



DRIVE MOTORS AND ACTUATORS

Automated equipment and robotics rely on 6 axis motion to perform their tasks. As motors turn, actuators fire and robotic arms grasp – cable assemblies that provide secure latching and shock / vibration resistance aren't a bonus; they're a must have.



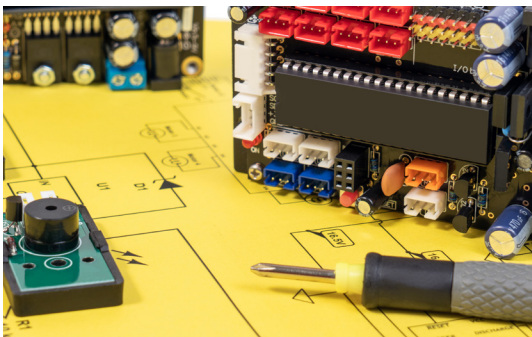
SENSORS

Sensors are the eyes and ears of any autonomous system. Whether it's a highly mobile delivery robot or an agricultural environment analyzer, the data collected requires premium base components and shielded cables to deliver consistent and reliable data.



COMMUNICATIONS

Our cable assemblies for communication applications range from OBD and CAN bus interfaces using industry standard connectors to high speed X-Code Ethernet solutions, providing real time actionable data.



CONTROLLERS

Controllers are the brains of any automated equipment application. They provide the intelligence that all sub-systems require to operate properly and efficiently. This requires a high level of port specific cable design, with a wide variety of connector & cable requirements. NorComp's wide product range and our ability to utilize third party components allows for turnkey solutions from a single source.



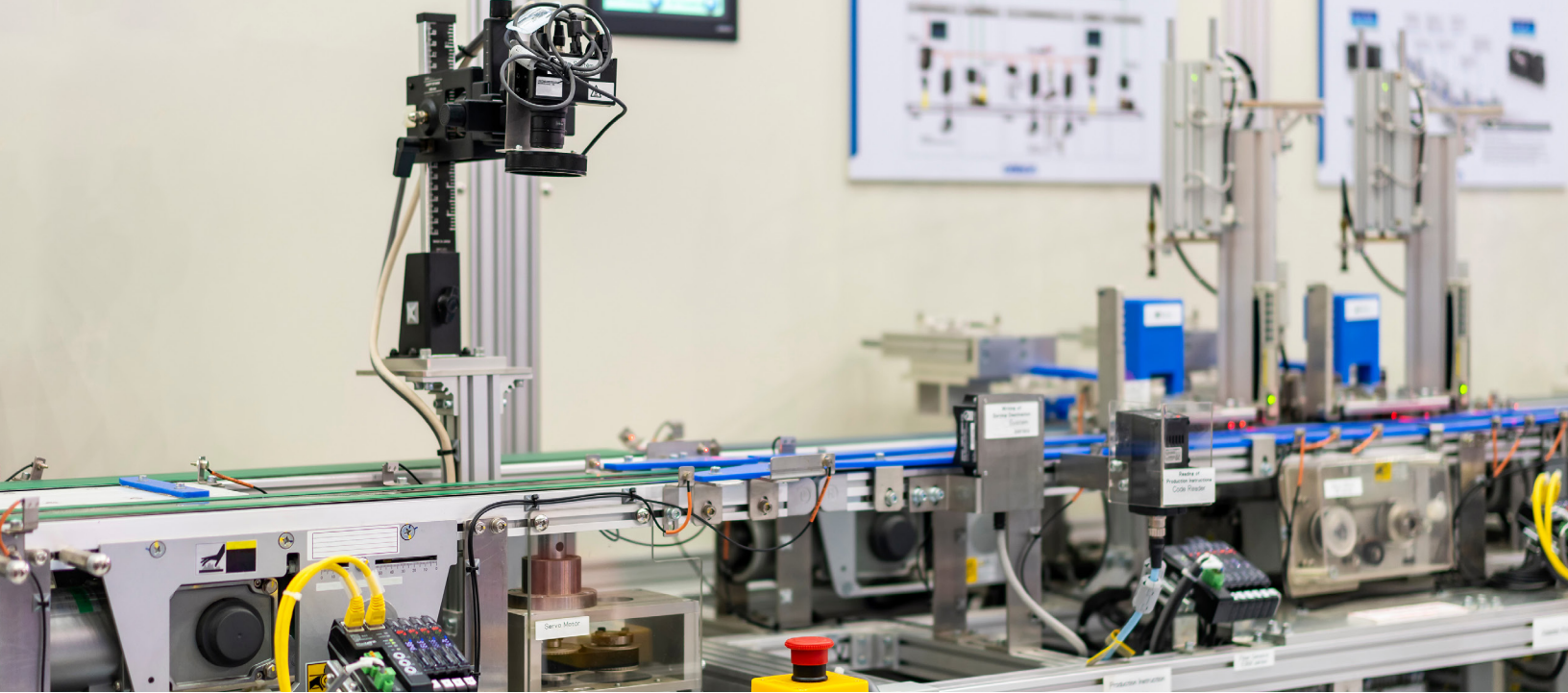
SUCCESS STORY

ROBOTICS & AUTOMATION

One of the primary North American brands responsible for driving forward robotic innovation had been working with NorComp for their interconnect solutions for years when they ran into a deficiency with their current cable assembly provider. After discovering NorComp was able to provide exactly what they were looking for with even more opportunity and flexibility with our design team they were sold.

WHY NORCOMP

Requirements for twist, shock, and vibration resistance already had the customer sourcing NorComp circular connectors and it became that much easier to work with us on the full cable harness cutting down on their internal teams workload by utilizing our engineering team. Sourcing a specialized jacket material to ensure UV protection, while staying within the AWG requirements, NorComp was able to provide the necessary shielding options for the application. The finished product being a fully shielded ready to place cable harness that halved their production time with an added bonuses of lower cost and a higher reliability component.



CONSIDERATIONS FOR CUSTOM CABLE ASSEMBLIES

Designing custom cable assemblies across industries

1. DETERMINE YOUR ELECTRICAL DEMANDS

Let us know the high-end voltage and current requirements for your assembly application, and from there we can assist in selecting the appropriate insulator and contact types along with specific cable conductor gauges.

2. IDENTIFY YOUR SIGNAL & DATA REQUIREMENTS

Understanding your data speeds and signal latency requirements is critical in both the connector and cable specification process. Are you humming along at the low end of the spectrum, or are you pushing high speed frequencies?

3. CONNECTOR/CABLE SHIELDING REQUIREMENTS

Environmentally EMI/RFI shielding from external sources can be a critical performance issue, and NorComp offers a variety of shielding solutions to combat them. External cable shielding ranges from a simple foil wrap for fairly benign environments to double shielded foil/braid and individually shielded pairs for extremely noisy ones.

4. CONSIDER MECHANICAL CONSTRAINTS

How compact is your design? How easy is it to route your cables and gain access to the connector interfaces should maintenance need to be performed? We produce a wide range of molded cable designs with straight and angled exits in variety of height profiles & strain relief options, and can match these with both screw lock and push-pull connector options.

5. EVALUATE YOUR OPERATING ENVIRONMENT

Is your system operating in a controlled indoor environment or is it going to get pounded? In the desert, on top of a mountain, or on an assembly line in a factory? Our cable solutions range from one extreme to the other – with ruggedized jackets and overmolds that will survive extreme temperatures, Ultra Violet and Petrochemical exposure.

6. SPECIAL CONSIDERATIONS

Does your design require a combination of multiple jacketed cables & discrete wire harnesses combined into an easy to identify, purchase and install unit? Our molded splitter and breakout systems can turn an engineering nightmare into a breeze.



CIRCULAR

- Rugged and waterproof to stand up against harsh environments
 - Available in M5, M8, M12, & M16
 - Pin counts ranging from 2 to 17 positions
 - IP67/IP68 when mated or unmated
 - Stainless steel options available
-



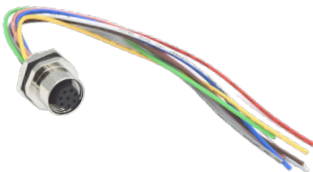
D-SUBS

- Available in 10 standard and high-density sizes
 - Screw-machined contacts for high mating cycles
 - 5 amp contact rating / - 55°C to +105°C
 - SEAL-D options available for applications requiring IP67 connection
-



QUIK-LOQ

- Rapid latching release mechanism with alignment key
 - Machined contacts and housing
 - High mating cycles >5000
 - 360° shielding for full EMI / RFI
-



PIGTAILS

- Available in Brass or 316 Stainless Steel
 - Both M16 & PG9 panel mount options
 - IP67/IP68 performance
 - Ground Tabs available for EMI/RFI Shielding
 - Operating temp: -40C to +85C
-



MICRO-D

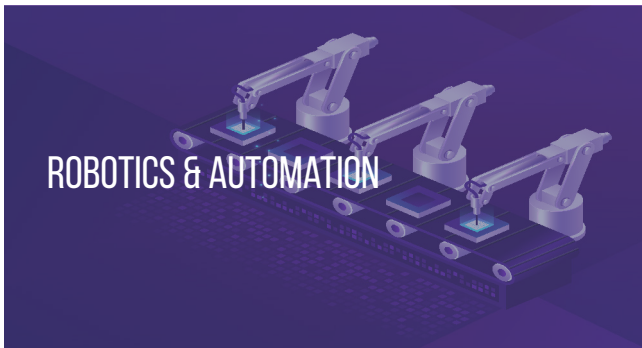
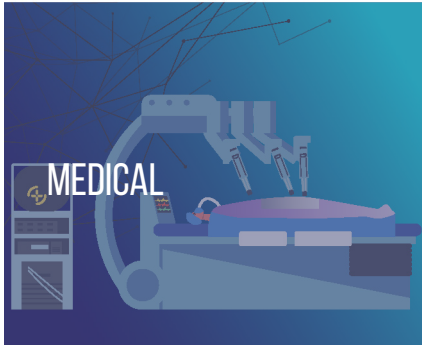
- Robust shielding in a compact footprint
 - 9, 15 & 25 pin sizes
 - 1 AMP contact rating / -55°C to +85°C
 - Machined contacts available for increased reliability
 - **MICRO-D Backshells Now Available**
-



CUSTOM CONNECTORS & SPLITTERS

- The same reliable connectors
 - Unlimited contact configurations
 - Signal or power contacts
-

INDUSTRY



MEDICAL

- Surgical Assistance Units
- Harsh Wash Down Proof
- Mobile Medical Equipment
- Emergency Response Electronics

TELEMATICS

- Smart Shipping Containers
- Fleet Coordination
- Construction Equipment Tracking

RUGGED ENVIRONMENTS

- Arctic Temperature Rapid Charging Freight Drones
- Ocean Rig Platforms
- High-Heat Manufacturing
- High Speed Racing

OUTDOOR SENSORS

- Agricultural Sensors
- Weather Data Logger
- Natural Energy Harvester
- Traffic Monitoring
- Foreign Object Detection

ROBOTICS & AUTOMATION

- Last Mile Delivery
- Pack & Place
- Warehouse Automation
- Semi-Conductor Fabrication
- Laser Cutting



CUSTOM CABLE ASSEMBLIES



Customer Service & Sales: sales@norcomp.net

3810 Shutterfly Rd. Suite #200 Charlotte, N.C. 28217

800-849-4450 (Toll Free) | 704-424-5448 (Local) | 704-424-5648 (Fax)

www.NORCOMP.net