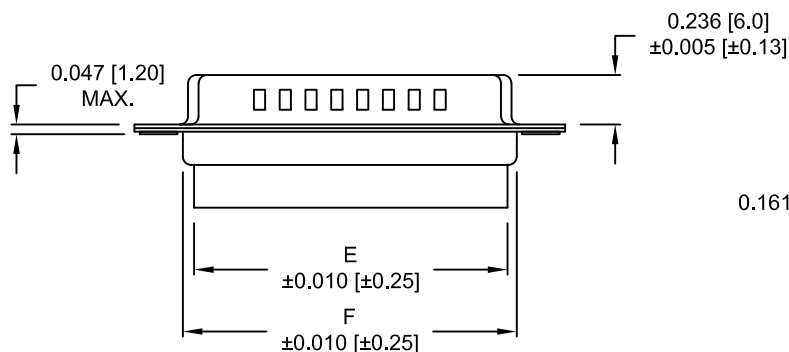
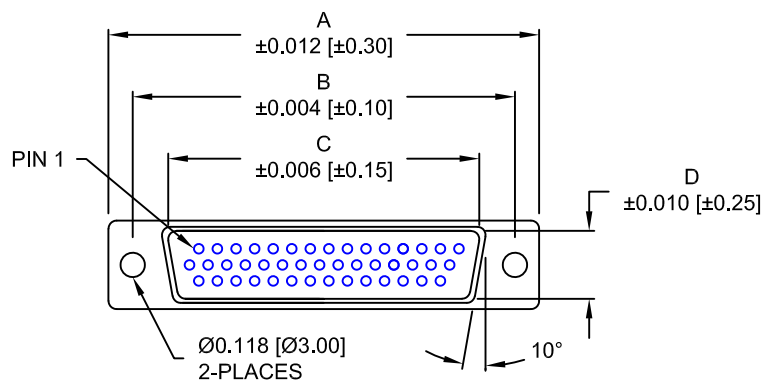


DESCRIPTION: MALE - CRIMP AND LOAD



MATERIAL:

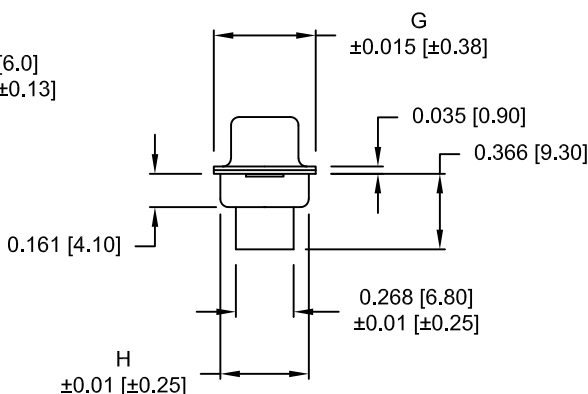
SHELL: STEEL, TIN OR NICKEL PLATED
INSULATOR: PBT, UL 94V-O RATED,
+30% FIBER-GLASS OR NYLON-66
CONTACT: BRASS, GOLD PLATED OVER NICKEL

ELECTRICAL:

CURRENT RATING: 3 AMPS
CONTACT RESISTANCE: 15 mOhms Max.
INSULATION RESISTANCE: 1,000 MOhms min.
VOLTAGE: 500VAC FOR 1 MINUTE
TEMPERATURE: -50° C TO 100° C

RoHS COMPLIANT

4 ROWS



DIMENSIONS

No. OF PINS	A	B	C	D	E	F	G	H
15	1.213	0.984	0.666	0.325	0.610	0.759	0.494	0.421
	30.81	24.99	16.92	8.25	15.50	19.28	12.55	10.70
26	1.541	1.312	0.994	0.325	0.964	1.083	0.494	0.421
	39.14	33.32	25.25	8.25	24.50	27.51	12.55	10.70
44	2.088	1.852	1.534	0.325	1.494	1.625	0.494	0.421
	53.04	47.04	38.96	8.25	37.95	41.28	12.55	10.70
62	2.729	2.500	2.182	0.319	2.142	2.272	0.494	0.421
	69.32	63.50	55.42	8.1	54.40	57.71	12.55	10.70
78	2.638	2.406	2.079	0.445	2.043	2.169	0.606	0.526
	67.00	61.10	52.80	11.30	51.90	55.10	15.40	13.35

180-YYY-17YLYY0

SERIES
POSITIONS
015
026
044
062
078
GENDER
1 = MALE
TERMINATION
7 = CRIMP & LOAD
SHELL PLATING
2 = TIN (GROUND INDENTS)
3 = NICKEL (GROUND INDENTS)
RoHS COMPLIANT (230°C)
HARDWARE OPTIONS
00 = NO HARDWARE
01 = .157" CLINCH NUT (BOARD SIDE)
02 = .236" CLINCH NUT (BOARD SIDE)
03 = .236" CLINCH NUT (MATING SIDE)
PLATING OPTIONS
0 = NO CONTACTS

DO NOT SCALE FROM DRAWING



THESE DRAWINGS AND SPECIFICATIONS ARE THE PROPERTY OF NorComp AND SHALL NOT BE REPRODUCED, COPIED OR USED AS THE BASIS FOR THE MANUFACTURE OF SALE OF APPARATUS WITHOUT WRITTEN PERMISSION.

DRAWN:
FRANCISCO PADILLA

DATE:
06-20-18

CHECKED:

DATE:

SCALE:
1 : 1

SHEET
1 OF
2

REV
17

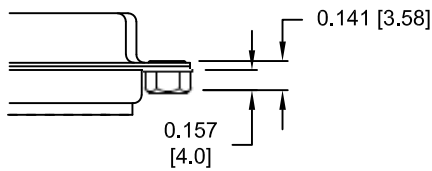
DWG NO. 180-YYY-17YLYY0

NorComp

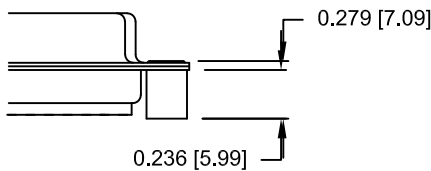
ALL CLINCH-NUTS ARE 4-40 INTERNAL THREADS

TOLERANCE:
ALL DIMENSIONS ARE ±0.010

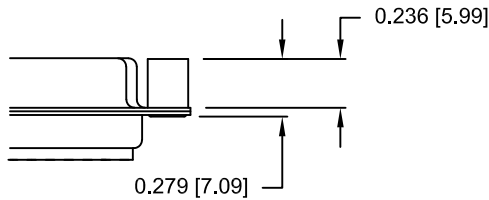
01X 0.157" (BOARD SIDE) - CN1



02X 0.236" (BOARD SIDE) - CN2





03X..... 0.236" (MATING SIDE) - CN8



DO NOT SCALE FROM DRAWING

RoHS COMPLIANT

	THESE DRAWINGS AND SPECIFICATIONS ARE THE PROPERTY OF NorComp AND SHALL NOT BE REPRODUCED, COPIED OR USED AS THE BASIS FOR THE MANUFACTURE OF SALE OF APPARATUS WITHOUT WRITTEN PERMISSION.	DRAWN: C. SMITH		DATE: 03-08-06	
		CHECKED:		DATE:	
		SCALE: FULL	SHEET 2 OF 2		REV 17
		DWG NO. 180-YYY-17YLYY0			